

IsoUs – Ultimate Step Plugin - Functions

www.promax.it



PROMAX

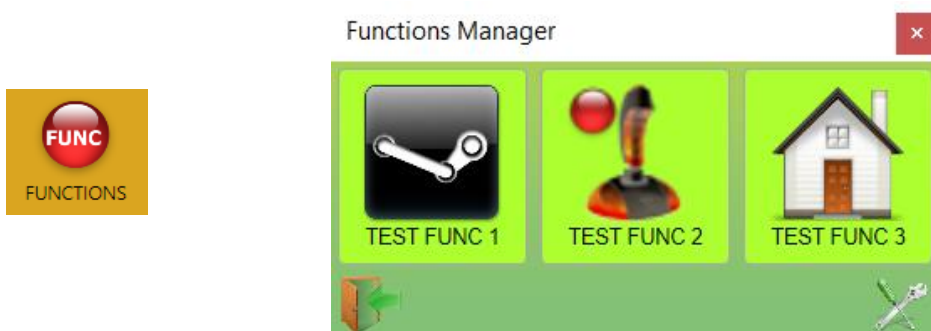
**Motion
&
Control**

The contained information in this handbook are only informative and they can being change without warning and they must not being understandings with some engagement from Promax srl. Promax srl does not assume responsibility or obligates for errors or inaccuracies that can be found in this handbook. Except how much granted from the license, no part of this publication can be reproduced, saved in a recording system or transmitted in whatever form or with any means, electronic, mechanical or recording system or otherwise without Promax srl authorization.
Any reference to names of society or products have only demonstrative scope and it does not allude to some real organization.


Rev. 1.0.0 © Promax srl

1 Functions

This Plugin allows to configure functions on CNC IsoUs.
 These functions are inserted by Gcode file and will be available by button.
 When the relative button is pressed the function will be activated.



1.1 PlugIn Configuration

For Add or Remove a function, press the button: 


Configuration Window



Functions Config ✕

Description	Gcode File	Help	Run Mode	Img
TEST FUNC 1	FUNC3.ISO	TEST FUNC 1	SCRIPT	
TEST FUNC 2	FUNC2.ISO	TEST FUNC 2	NORMAL	
TEST FUNC 3	FUNC1.ISO	TEST FUNC 3	NORMAL	

Bottom toolbar:      

Buttons

 Exit to the configurator

  Move UP or DOWN the selected element. The position will be changed in the Tool Bar functions



Add a new “*empty*” function

Insert the following fields:

- Description** Double Click in this field for insert a text that will be showed in the button function
- Gcode File** Double Click in this field for open the Gcode File Browser. Select the Gcode file associate to the function button. The Gcode file selected, will be executes when the button will be pressed.
- Help** Double Click in this field for insert a text that will be showed when the mouse pointer will be on the button
- Run Mode** Select the mode of RUN function:
- NORMAL** The function is executes in **NORMAL MODE**, so how a Gcode file RUN with button START.
These functions are available only in **CNC STOP MODE**
 - SCRIPT** The function is executes in **SCRIPT MODE**, so some movements are disabled (G2-G3).
These functions are available also when the **CNC is in PAUSE MODE**
- Img** Double click for select the image on the button



Remove the selected function



Save the configuration

Sommario

1	Functions.....	3
1.1	Configurazione del PlugIn	3